



MASON INDUSTRIES, Inc.
MERCER RUBBER Co.

350 Rabro Drive, Hauppauge, NY 11788
 Mason- 631/348-0282 • Info@Mason-Ind.com
 Mercer- 631/582-1524 • Info@Mercer-Rubber.com
 FAX 631/348-0279



CERTIFIED FOR

JOB NAME _____

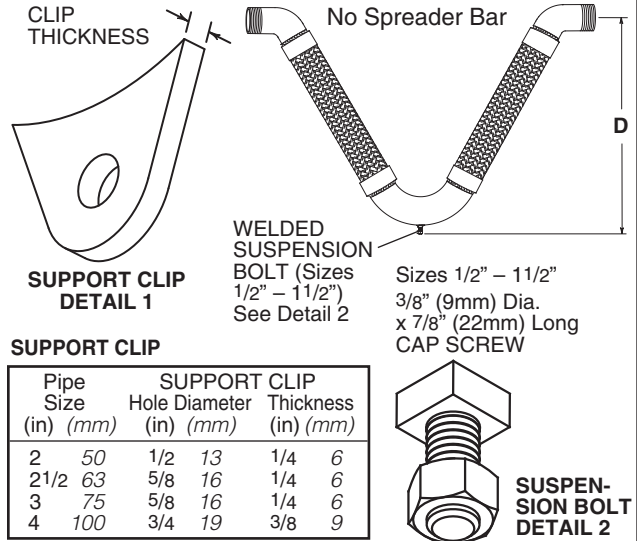
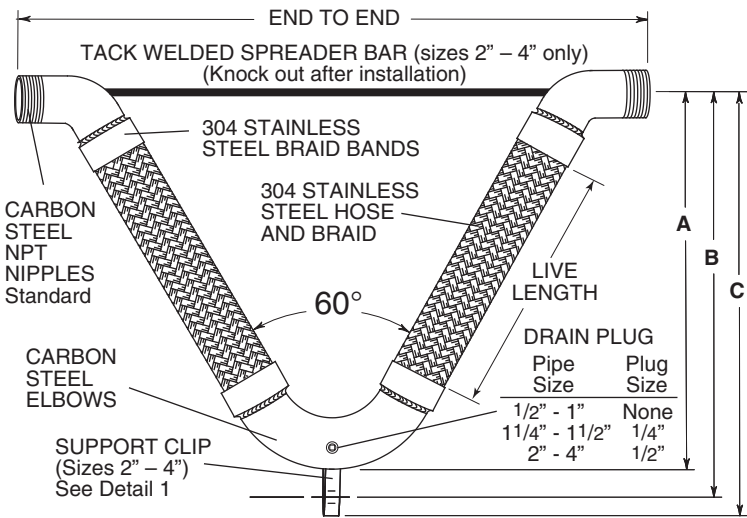
CUSTOMER _____

CUSTOMER P.O. _____

MASON M. _____ **DWG No.** _____

VMN

EQUI-V HOSE with MALE NIPPLES



NON-VOLATILE FLUIDS RATED PRESSURES @ ELEVATED TEMPERATURES (psi) (kg/cm²)

Hose Size (in) (mm)	250°F 121°C Factor 0.92	350°F 176°C Factor 0.86	450°F 232°C Factor 0.81
1/2 15	1010 69	950 59	890 61
3/4 20	640 44	600 41	570 39
1 25	530 36	500 34	470 32
1 1/4 32	460 32	430 30	400 28
1 1/2 40	400 28	370 26	350 24
2 50	330 23	310 21	290 20
2 1/2 65	270 19	250 17	235 16
3 80	260 18	240 16	230 16
4 100	210 15	200 14	190 13

SATURATED STEAM RECOMMENDED PRESSURE LIMITS

Size (in) (mm)	Max Gauge (psi) (kg/cm ²)	Temp Reference (°F) (°C)
1/2 15	200 14	387 197
3/4 20	200 14	387 197
1 25	150 11	362 183
1 1/4 32	150 11	362 183
1 1/2 40	150 11	362 183
2 50	150 11	362 183
2 1/2 65	125 9	355 179
3 80	125 9	355 179
4 100	125 9	355 179

Our steam service ratings are very low in the interest of safety although our 70°F (21°C) pressure ratings are as high or higher than our competitors. All locations where failure could lead to personal injury or suffocation must be avoided. In dangerous locations we suggest housed expansion joints, solid loops, ball joints, packed devices etc. rather than thin walled flexible products regardless of manufacturer.

Consult factory with full location description as well as service conditions for higher pressure or temperature applications.

304 SS can be used up to 850°F (454°C) in applications such as engine exhaust.

VMN DIMENSIONS AND PRESSURE RATINGS (British Units) ±4" ALL DIRECTIONAL SEISMIC MOVEMENT

Type	Pipe Size & End to End [†] (in)	Live Length (in)	Corrugations per foot	A (in)	B (in)	C (in)	D (in)	Rated Pressure @70°F ^{††} (psi)
VMN	1/2 X 23	14	108	15 1/8	—	—	16 1/4	1100
VMN	3/4 X 24	15	94	16 1/8	—	—	17 1/4	700
VMN	1 X 26	16	84	17 7/8	—	—	19	580
VMN	1 1/4 X 29	17	74	18 1/2	—	—	19 5/8	500
VMN	1 1/2 X 32	19	70	20 3/4	—	—	21 7/8	430
VMN	2 X 36	20	68	23 1/4	24 1/8	24 3/4	—	360
VMN	2 1/2 X 41	22	56	26	27 1/8	28	—	290
VMN	3 X 46	24	54	28 7/8	30	30 3/4	—	280
VMN	4 X 55	26	32	32 1/2	33 3/4	34 7/8	—	230

VMN DIMENSIONS AND PRESSURE RATINGS (Metric Units) ±102mm ALL DIRECTIONAL SEISMIC MOVEMENT

Type	Pipe Size & End to End [†] (mm)	Live Length (mm)	Corrugations per meter	A (mm)	B (mm)	C (mm)	D (mm)	Rated Pressure @21°C ^{††} (kg/cm ²)
VMN	15 X 575	350	354	378	—	—	407	76
VMN	20 X 600	375	308	403	—	—	432	48
VMN	25 X 650	400	276	447	—	—	476	40
VMN	32 X 725	425	243	463	—	—	492	34
VMN	40 X 800	475	230	519	—	—	548	30
VMN	50 X 900	500	223	581	613	594	—	25
VMN	65 X 1025	550	184	660	689	700	—	20
VMN	80 X 1150	600	177	733	762	769	—	19
VMN	100 X 1375	650	105	826	857	872	—	16

[†]End to End Tolerances: All Sizes, ±1/4"(6mm) ^{††}Minimum Burst is four times the Rated Pressure. Safety factor of 4.

CERTIFICATION DATA

QUANTITY	SIZE	TAG

DWN CHKD DATE

DWG No.